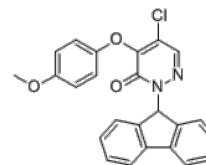


Product Name : ML250
Cat. No. : PC-38611
CAS No. : 1421365-63-0
Molecular Formula : C₂₄H₁₇ClN₂O₃
Molecular Weight : 416.861
Target : Other Targets
Solubility : 10 mM in DMSO



Biological Activity

ML250 (CYM 50769) is a potent and selective GPR7 (Neuropeptides B/W receptor 1, NPBWR1) antagonist probe, inhibits human GPR7 expression in the presence of GPR7 agonist NPW with IC₅₀ value of 124 nM-244 nM, displays 82- >161 fold selectivity over MCH1.

References

Miguel Guerrero, et al. In: Probe Reports from the NIH Molecular Libraries Program [Internet].

Miguel Guerrero, et al. Bioorg Med Chem Lett. 2013 Feb 1;23(3):614-9.

Caution: Product has not been fully validated for medical applications. Lab Use Only!

E-mail: tech@probechem.com